

# MONTHLY MEMBERSHIP PROGRESS REPORT

LOCATION TEXAS

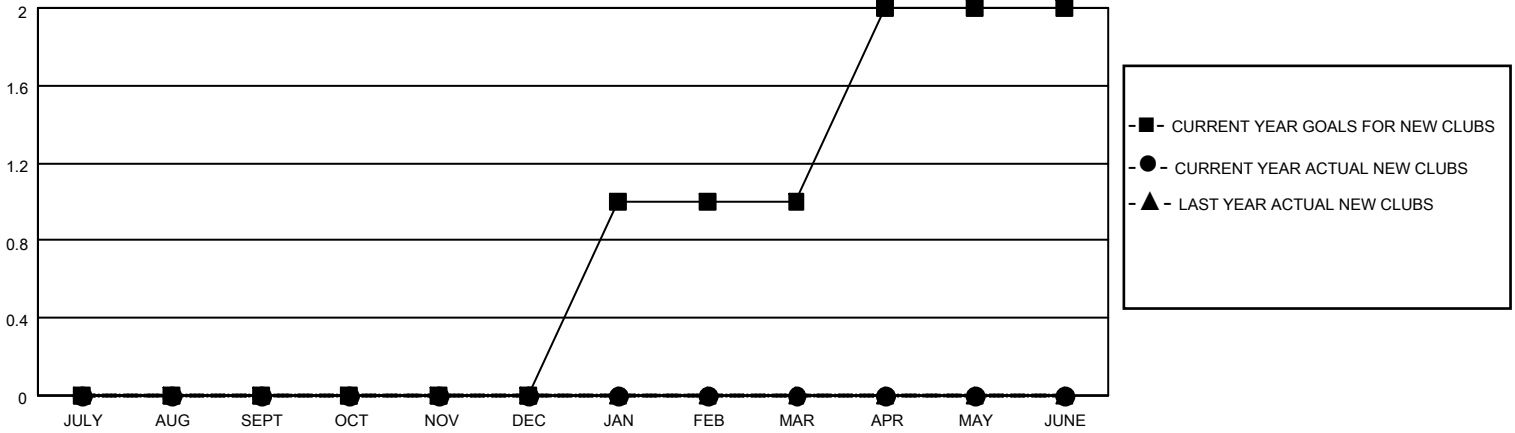
District 2 A2

Results as of: 2/28/2023

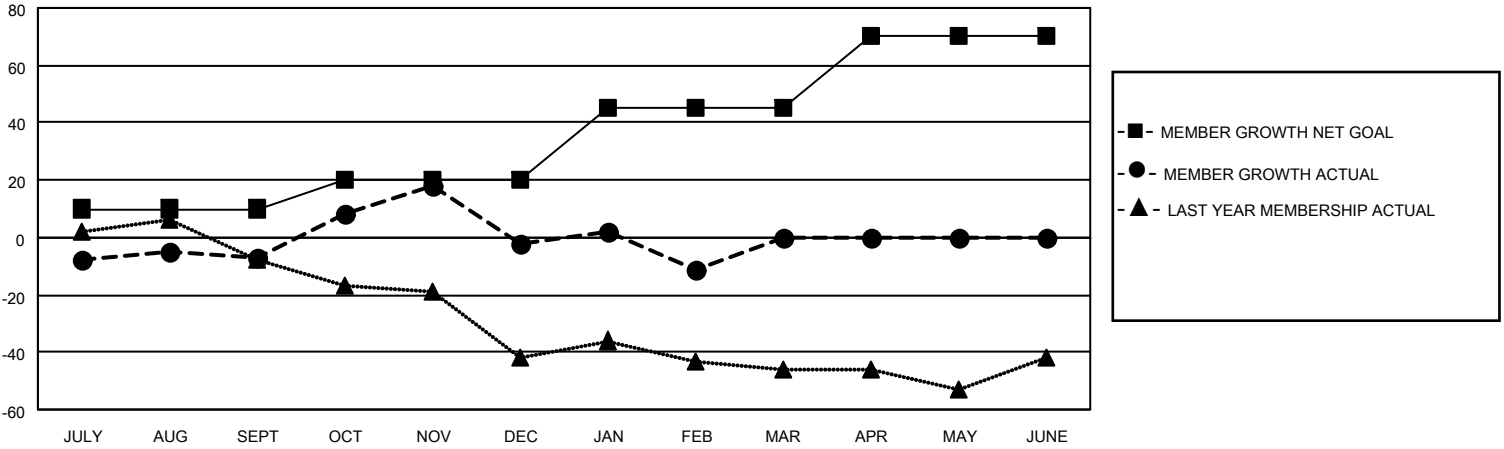
Clubs			
RESULTS FOR 2022-2023			
QUARTER	NEW CLUB GOAL	NEW CLUBS	DROPPED CLUBS
JULY/AUG/SEPT	0	0	3
OCT/NOV/DEC	0	0	0
JAN/FEB/MAR	1	0	0
APR/MAY/JUNE	1	0	0

Members			
RESULTS FOR 2022-2023			
QUARTER	MEMBER GROWTH NET GOAL	MEMBER GROWTH ACTUAL	DROPPED MEMBERS ACTUAL (including transfers)
JULY/AUG/SEPT	10	41	45
OCT/NOV/DEC	10	49	42
JAN/FEB/MAR	25	19	27
APR/MAY/JUNE	25	0	0

**GOALS AND ACTUAL NEW CLUBS CUMULATIVE**



**GOALS AND ACTUAL MEMBERS CUMULATIVE**



**DROPPED CLUBS: 3**

**30 CLUBS OF 61 ADDED 1 OR MORE NEW MEMBERS**

**GENDER DISTRIBUTION**

MALE	881 (60.26%)
FEMALE	579 (39.60%)
NON BINARY	0 (0.00%)
PREFER NOT TO ANSWER	2 (0.14%)

**DROPPED MEMBERS**

[CLICK HERE FOR CUMULATIVE MEMBERSHIP DATA](#)

DECEASED	13
CLUB CANCELLED	0
OTHER	101
<b>TOTAL</b>	<b>114</b>

TOTAL FAMILY UNIT MEMBERS 276

FAMILY MEMBERS PAYING HALF DUES 140